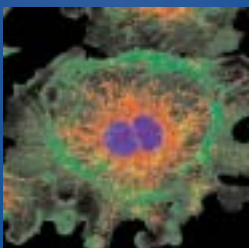


# Nikon®

## *DIGITAL SIGHT DS-5M-L1*

*The All-in-One Digital Camera System for Microscopy*

- Innovative Compact Stand-Alone Design
- 5 Megapixel High-Resolution Images
- Brilliant 6.3-in LCD Monitor
- Exciting Imaging Features for Users of all Levels
- Versatile Networking Capabilities



The innovative DS-5M-L1 is based on the concept of an all-in-one digital imaging system for microscopy applications. The design emphasizes the ease of capturing high resolution images up to 5-Megapixels in the most efficient manner possible—a stand-alone control unit with a built-in 6.3-in. LCD monitor, easy-to-use menus, and optimum programmed functions for various modes of digital imaging. The DS-5M-L1 combines comfort, convenience, and high quality imaging into a single package for microscope users of all levels.

# DIGITAL SIGHT DS-5M-L1

## The All-in-One Digital Camera System for Microscopy

### EMBRACE THE DIGITAL SIGHT EXPERIENCE WITH DS-5M-L1

#### Innovative Compact Digital Imaging Camera System

The DS-5M-L1 incorporates a stand-alone design and takes digital imaging to the highest level with numerous innovative functions and high resolution image capture for microscopy users of all levels. The Camera Control Unit (CCU) provides brilliant image display through its 6.3-in. LCD monitor, an external display monitor, or projector.

#### Exciting Camera Features & Tools for High-End Professional Imaging

DS-5M-L1 offers pre-programmed imaging modes for one-click settings and image capture for novice or professional users. Advanced menus are also available for full user control settings. Select from various live displays and capture modes for user-preferred image update speed, image resolution and file size. Embedded application tools include Point-to-Point Distance Measurement, Full Scale Calibration, Count-Marking, Pen Marking Routines, Image Superimposition, Split Screen Display, and much more.

#### Stand Alone Operation with PC Networking Options

The DS-5M-L1 camera control unit (CCU) operates independent of a PC complete with camera control and imaging functions. The DS-5M-L1 also offers versatile networking capabilities via its 10/100 Base-TX Ethernet Port with HTTP, Telnet, FTP Server/Client support and DHCP compatibility for data transfers up to 100Mbps. PC platforms are no longer a concern with PC/Mac web browser live image streaming and camera control capabilities. The DS-5M-L1 utilizes Mass Storage Class support for direct PC viewing of stored images via its USB 1.1/2.0 Device Port. Transferring image files has never been this quick and easy!

#### Dimensions



#### Specifications

CCD	2/3-in. high density CCD; total number of pixels: 5.24 million (effective 5.07 million)
Sensitivity	2400 lx, F5.6 or greater; equivalent to ISO 260
A/D conversion	12-bit
Lens mount	C-mount
Exposure control	Program AE, Shutter-priority AE, Focus AE, manual, with AE lock function
Exposure time	1/1000 to 60 sec.
Digital zoom	Up to 16X (8 steps)
Interval shooting	10 sec. - 6 hr. intervals
Exposure metering range	3 selectable sizes
Compensation	White balance, Gamma compensation (9 types), Shading compensation (Auto: 5-step, Custom settings: 2 types)
Color effects	Color/monochrome, Color enhancement, Hue rotation, Black level adjustment
Image rotation	Vertical and horizontal rotation
LCD monitor	6.3-in. TFT color LCD XGA (1024x768, 60Hz)
External monitor output	Analog RGB: SXGA (1280x1024, 60Hz), XGA (1024x768, 60Hz)
Live display mode	5M interlace mode (3.75 frames/sec. max) 1.3M progressive mode (7.5 frames/sec. max) 1.3M interlace mode (6.8 frames/sec. max) Center scan mode (15 frames/sec. max. displays 1/2 in center of V direction)
Image size	2560x1920 pixels, 1280x960 pixels, 640x480 pixels
Storage format	BMP, JPEG (4-step compression)
Storage media	CompactFlash™ card (Type I, Type II)
Networking	Ethernet (10/100 Base-TX), DHCP compatible HTTP, Telnet or FTP server, FTP client
Interface	USB1.1 host port (USB mouse, USB keyboard connection) USB1.1/2.0 device port (Mass Storage Class support)
Power supply	AC100-240V, 50/60Hz
Weight	Camera head: approx. 230g, CCU: approx. 1300g, AC adapter: 350g
Operating environment	0-40°C, 85%RH max. (without condensation)
System composition	Camera head DS 5M, CCU DS-L1, Camera cable (3m); AC adapter, power cord
Optional accessories	Exclusive remote control unit, 0.7x Relay Lens (C-mount)

#### Interface

